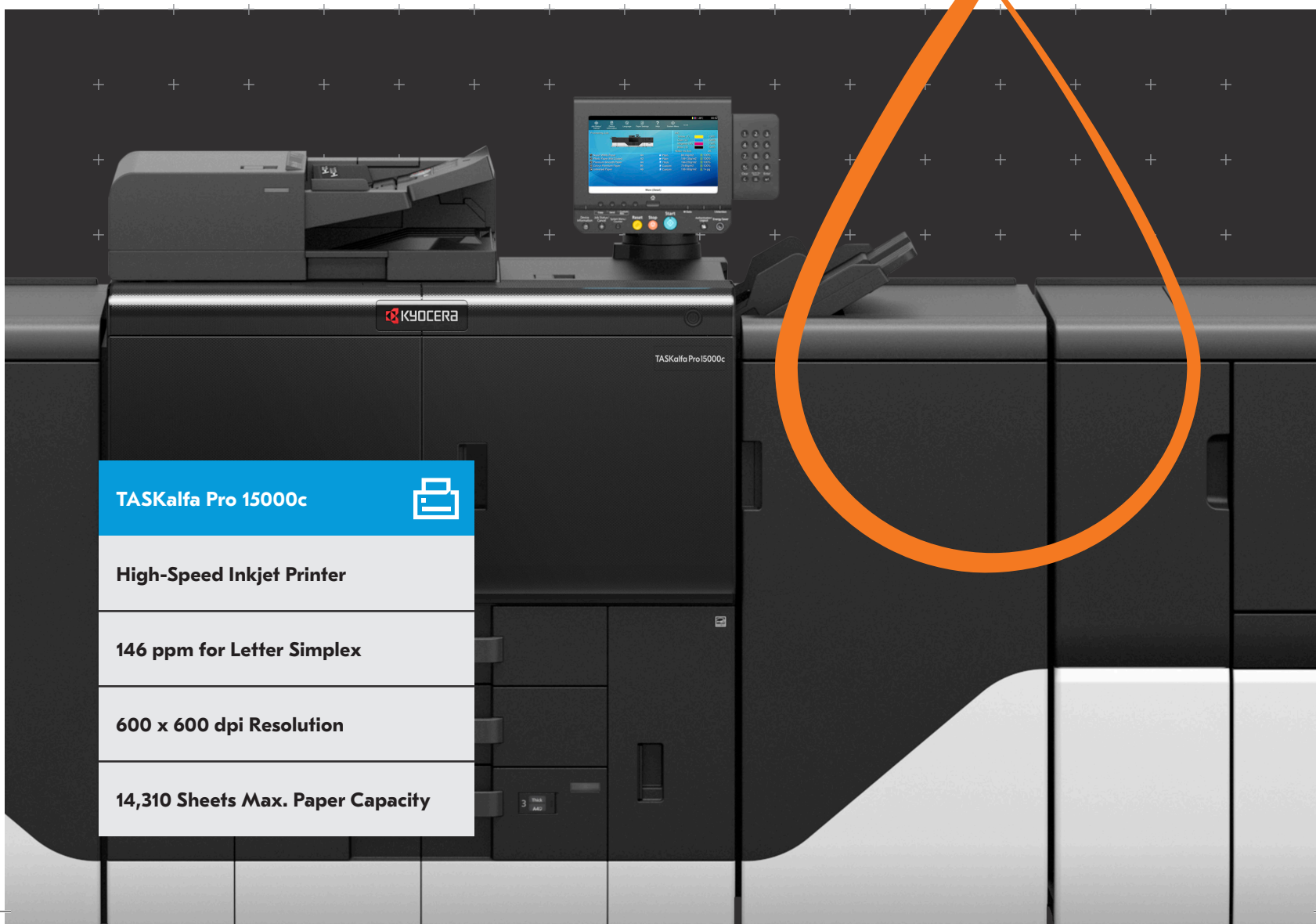


The new reason for your customers to choose inkjet.

The TASKalfa Pro 15000c is more of what your customers want from inkjet printing. It's a cost-efficient, right-sized alternative to conventional printing, ideal for shorter-run, highly variable jobs, yet it's also fast and reliable. Using trusted print head and ink technologies developed by Kyocera, the TASKalfa Pro 15000c delivers standout image stability, as well as consistent output from high-pigment ratio and high-permeability Kyocera inks. Welcome to a new breed of super-fast inkjet production printing from Kyocera.

**TASKalfa Pro 15000c****High-Speed Inkjet Printer****146 ppm for Letter Simplex****600 x 600 dpi Resolution****14,310 Sheets Max. Paper Capacity**



The TASKalfa Pro 15000c is more of what your customers want from inkjet printing. It's a cost-efficient, right-sized alternative to conventional printing, ideal for shorter-run, highly variable jobs, yet it's also fast and reliable.

Specifications

Basic Specifications

Configuration: High Speed Color Inkjet Multifunction System
Speed: Color/Black – Letter: 146 ppm, Legal: 98 ppm, 11"x17": 86 ppm, 12" x 18": 74 ppm (print only)
Warm Up Time: 120 Seconds or Less (Power On)
First Page Out:
Copy: 5.0 Seconds or Less Black/Color
Print: 5.5 Seconds or Less Black/Color
Resolution: 600 x 600 dpi; 600 x 1200 dpi
Display: 9" Color Touch Screen Control Panel
Memory / Hard Disk Drive: 4.5GB RAM / 32GB SSD / 1TB HDD Standard
Duplex: Standard Stackless Duplex Supports Statement (5.5" x 8.5") to 12" x 18" (60 - 300gsm)
Standard Output Tray: Statement – 13" x 19.2" / 500 sheets
Typical Electricity Consumption (TEC):
120V: 7.5 kWh/week
220V: 7.5 kWh/week
Dimensions: 77" W x 29" D x 48" H
Weight: 679 lbs. or Less
Maximum Monthly Duty Cycle: 1,000,000 Pages per Month

Paper Supply

Standard Paper Sources: Dual 500 Sheet Trays, Dual 1,500 Sheet Trays, 150 Sheet MPT, Auto Selection / Switching
Optional Paper Sources: Dual 2,440 Sheet (PF-9100) Max 2 Units 550 Sheet Multi-Media Paper Feeder (PF-9110)
Paper Capacity: Standard: 4,150 Sheets; Maximum 14,310 Sheets
Paper Size:
Trays: 5.5" x 8.5" – 12" x 18" (Statement to 12" x 18")
MPT: A6/5.5" x 8.5" – 13" x 19.2"
***Paper Weight:**
Trays: Max 360gsm
MPT: Max 300gsm
Input Materials: Plain, II Plain, II Matte, Thick, Postcard, Tab, Envelope, Oversize Media, II Media

Fiery Controller Printing System 50

Fiery System Version: Fiery FS300 Pro
Configuration: External
Memory: 16GB (8GB x 2)
CPU: Intel Xeon E5-2637 (3.5 GHz up to 3.7 GHz with turbo)
HDD: 500GB + 2 x 2 TB SATA

Security Specifications

Standard: Local Authentication, Network Authentication (Ipsec, HTTPS, LDAP over SSL, SNMPv3), Secure Print (IPP over SSL), Scan to Email SSL, Scan to SMB/PC/USB, FTP over SSL (POP3/SMTP over SSL), Scan to FTP (FTP over SSL), Scan to SMB/PC/USB, FTP over SSL
Optional: Data Security Kit (E): HDD Overwrite Mode, HDD Data Encryption

*Some paper that falls within the limits of the stated specification may not always provide the best results. Factors such as smoothness, dust, stiffness, and grain can all have an impact on feed and image quality. Please test a small run of paper you plan to use to confirm compatibility before purchasing a large quantity.

Print Specifications

Standard Controller: QorIQ T1042 (Quad Core) / 1.2GHz
PDLs / Emulations: PCL6 (PCL-XL / PCL5c), KPDL3 (P53), PDF, OpenXPS, XPS, PPML
Print Resolution: Up to 600 x 1200 dpi
OS Compatibility: Windows: XP/Vista/7/8/8.1/10/Server 2003/Server 2018/ Server 2018 R2/ Server 2012/ Server 2012 R2; Novell NetWare 3.x/4.x/5.x/6.x; Mac Sun OS 4.1x; Solaris 2.x; AIX; HP-UX (LPR) OS 10.x; AirPrint Enabled
Drivers: KX Driver

Scan Specifications

Scan Type: Color Scanner
Scan Resolution: 600 dpi, 400 dpi, 300 dpi, 200 dpi, 200 x 100 dpi, 200 x 400 dpi
File Formats: TIFF (MMR Compression), PDF (MMR Compression), PDF (High Compression), OpenXPS, XPS, JPEG
PDF Extension: Searchable PDF (OCR)
Scan Speeds (B&W/Color, @300 dpi):
Simplex: 120 ipm
Duplex: 220 ipm
Scanning Functions: Scan to Folder (SMB), Scan to Email, Scan to FTP, Scan to FTP over SSL, Scan to USB, WSD Scan, TWAIN Scan
Drivers: TWAIN Driver/KM-WSDL/WSD

Copy Specifications

Copy Resolution: 600 x 600 dpi
Image Mode: Text, Photo, Text/Photo, Graphic/Map
Continuous Copy: 1 – 9999 / Auto Reset to 1
Additional Features: Auto Magnification, Auto Paper Select, Auto Start, Auto Drawer Change, Interrupt Copy, Positive / Negative Reverse, Mirror Image, Rotate Copy, Border Erase, Split Copy, Electronic Sort, Margin Shift, Page Number, Form Overlay, XY Zoom, Prevent Bleed Through, Text Stamp, Bates Stamp, Blank Page Skip
Job Management: 1,000 Department Codes, Job Programs, Job Build, **Color Adjustment:** One Touch, Hue, Auto Exposure, Sharpness
Magnification / Zoom: Full Size, 4 Reduction, 4 Enlargement Preset Ratios, 25 – 400% in 1% Step Increments

Standard Document Processor

Type / Capacity: Dual Scan Document Processor / 270 Sheets
Acceptable Originals: 5.5" x 8.5" – A3/11" x 17"
Acceptable Weights: Simplex: 35 – 220gsm / Duplex: 50 – 220gsm

3L Ink Feeding System IF-9100

Dimensions: 36.6" W x 22.6" D x 22.8" H
Weight: 119lbs.
Power Consumption: 642 W
***Requires 3L Ink Cartridges**

Output & Finishing Options

4,000 Sheet Finisher DF-9100

Stack Capacity: Main Tray (A): 4,000 Sheets; Sub Tray (B): 200 Sheets
Staple Capacity:
100 Sheet: A4, B5, Letter
50 Sheet: 12" x 18", 11" x 17", 8.5" x 14"
50 Sheet: Mixed Paper Size
Paper Size: A6/5.5" x 8.5" – 13" x 19.2"
Paper Weight: Max 360gsm
Edge Staple Position: 3 Positions: Top Left, Bottom Left, Center Bind
Dimensions / Weight: 29.5" W x 27" D x 43.6" H / 114 lbs.
Optional Booklet Folder: BF-9100 Booklet Folder Supports 13" x 19.2", 12" x 18", SRA3, A3, B4, A4R, 11" x 17", 8.5" x 14", 8.5" x 11" Booklet Staple Supports: 20 Sheet A3, B4, A4R, 11" x 17", 8.5" x 14", 8.5" x 11", (60 – 90gsm); 16 Sheets 13" x 19.2", 12" x 18", SRA3 (60 – 90gsm); 13 Sheet (91 – 105gsm)

Vacuum Feed Large Capacity Tray PF-9100

Dimensions: 12.9" W x 28.7" D x 39.3" H
Weight: 132 lbs. or Less
Power Consumption: Less than 860 W
Paper Size: A6/5.5" x 8.5" – 13" x 19.2"
Paper Capacity: 4,880 Sheets (2,440 Sheets per Tray)
Paper Weight: 75 – 360gsm

High Capacity Stacker ST-9100

Dimensions: 35.4" W x 39.3" D x 28.7" H
Weight:
Stacker: 264.5 lbs. Or Less
Rollaway Cart: 33 lbs. or Less
Power Capacity: 5,000 Sheets; Proof Tray: 250 Sheets
Paper Weight: Max 360gsm
Rollaway Cart: Optional additional carts available

Multi-Bypass Tray PF-9110

Paper Capacity: 550 Sheets
Paper Size: A6/5.5" x 8.5" – 13" x 19.2"
Paper Weight: Max 216gsm

Consumables

Ink – Water Based Pigment

Based on ISO 24712 image
Cyan: 1300ml (Yield = 163k)
Magenta: 1300ml (Yield = 120k)
Yellow: 1300ml (Yield = 213k)
Black: 1300ml (Yield = 92k)

Cyan: 3000ml (Yield = 395k)
Magenta: 300ml (Yield = 296k)
Yellow: 3000ml (Yield = 597k)
Black: 3000ml (Yield = 213k)



Specifications and design are subject to change without notice. For the latest on connectivity visit usa.kyoceradocumentsolutions.com. TASKalfa, are trademarks of the Kyocera Companies. AirPrint is a trademark of Apple, Inc. Google Cloud Print is a trademark of Google, Inc. All other trademarks are the property of their respective owners.

KYOCERA Document Solutions America, Inc.
Headquarters: 225 Sand Road, Fairfield, NJ 07004-0008, USA
©2019 KYOCERA Document Solutions America, Inc.
v120919